

MAC

Est. 1904

STEEL

STEEL POLYPIPE

ELL

MACSTEEL®

FLUID CONTROL

The original Steel Polypipe® is back!



Steel Polypipe® and its application is the premium hydro-transportation spool solution in Africa. The brand, which is manufactured and holds various patents in Southern Africa, has a 20-year track record. As a result of continuous innovation, Steel Polypipe® is currently the complete solution within the thermo-plastic lined-pipe sector pressure up to 25 Bar ratings. To date, in terms of hydro-transportation installations carried out in Africa, Steel Polypipe® holds the record for the largest, low to medium pressure solutions.

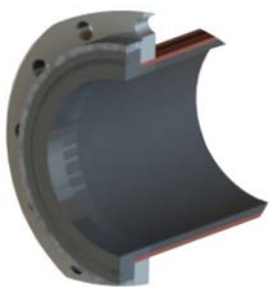
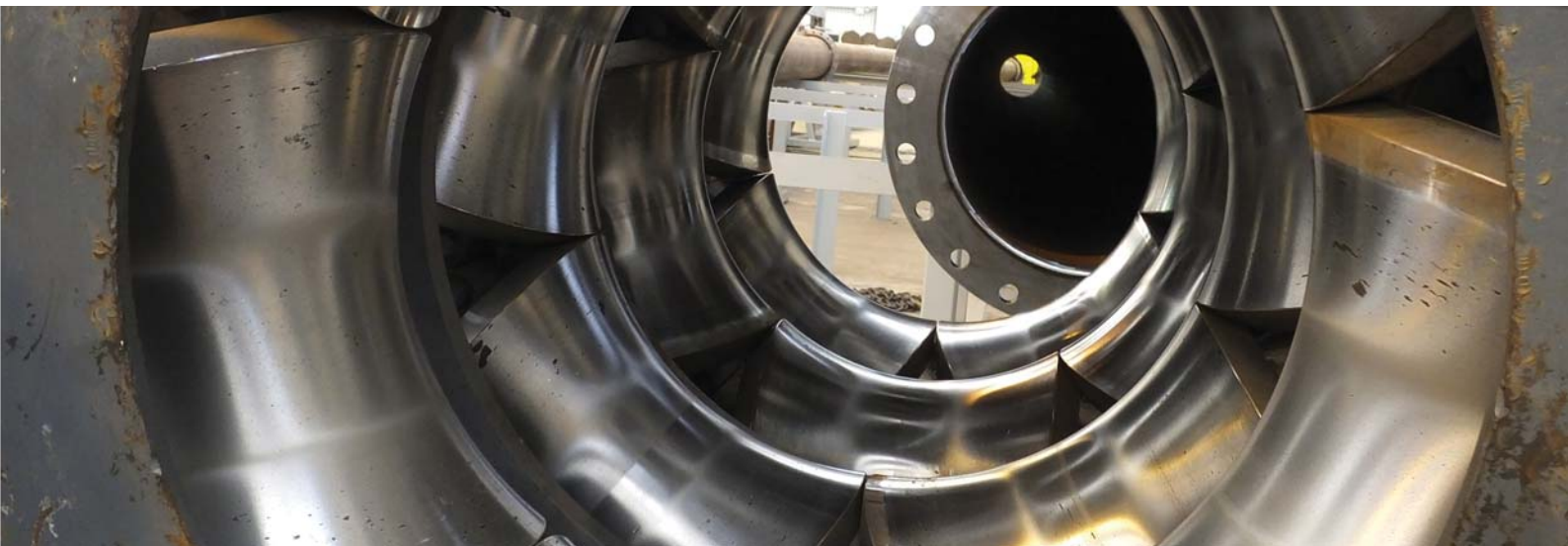
Characteristics

- Pipe sizes of 100mm (114mm OD) -800mm (810mm OD)
- Pipe lengths of 1m – 18m spools
- Pressure applications from 10 bar to 25 bar
- Machined HDPE stubs complete with steel ring and O-ring
- Flanged SANS 1123 system application
- Steel-to-Steel jointing system
- Above ground applications
- Compliment with its fittings range
- Bends are 5D to 7D long radius

Advantages

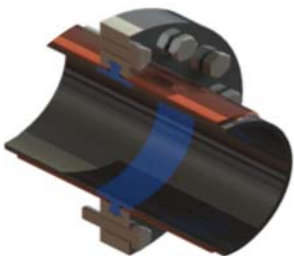
- Leak proof system
- Up to 25 bar pressure
- Reduced cost, safer and environmentally friendly

STEEL POLYPIPE® IS A PATENTED SOLUTION



Technical specifications

- “Tite-fit” roll-down technology
- SAPPMA approved HDPE liners according to ISO 4427
- Precision machined HDPE stubs with steel-rings
- O-ring for pressure control in the joint
- Steel-to-steel jointing system
- Cost effective
- Pipe lengths 6m up to 18m spools



Technologies for the Hydro Transport Market

- Traditional Polypipe® >25bar
- HTPS SLUR-e-JOIN™; Flanged 25 - 64bar



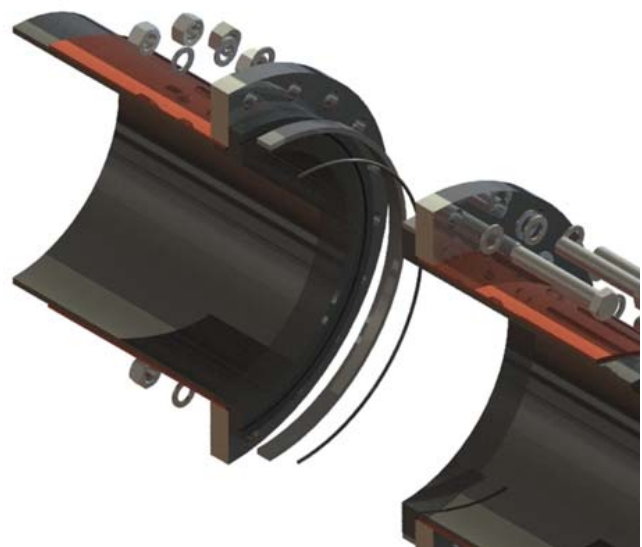
The traditional Spool jointing solution that delivers value

- A tight fit liner
- Steel blow rings
- Precision stub seal, groove with an O-ring
- Cost effective
- HDPE lined fittings

Product assembly

- External stub c/w an o-ring seal butts a flat stub to create a pressure seal
- A Reinforcing Rings over the stubs handle bolt and pipe forces to ensure the seal remains intact

- A tight fit liner up to 18m spools
- Improved rigidity and compact assembly
- Patented technology
- Corrosion and abrasion resistant



STEEL POLYPIPE® IS AN ENGINEERED SOLUTION



BOKSBURG (Divisional Head Office)
7 Brook Rd, Lilianton, Boksburg
PO Box 14585, Wadeville, 1422
Tel: +27 11 383 4000
Fax: +27 86 679 0023
email: info@macfluid.co.za

BETHAL
13 Vuyisele Mini St, 5 Brasslink, Bethal
PO Box 929, Bethal, 2310
Tel: +27 17 647 9340
Fax: +27 17 647 5653
email: info@macfluid.co.za

CAPE TOWN
Unit A2-A3 Steel Park, Symphony Way,
Belville South, Cape Town
PO Box 582, Kasselvlei, 7533
Tel: +27 21 959 7960
Fax: +27 86 679 0327
email: info.fcdctn@macfluid.co.za

DURBAN
Unit 3, 11 Travertine Crescent, Briardene
PO Box 201729, Durban North, 4016
Tel: +27 031 581 7803
Fax: +27 086 644 3752
email: johann.labuschagne@macfluid.co.za

RICHARDS BAY
Unit 3A, Umiton Park, Brasslink, Richards Bay
PO Box 1549, Richards Bay, 3900
Tel: +27 35 751 3900
Fax: +27 35 751 3905
email: dhinesh.maharaj@macfluid.co.za

PIPES, FITTINGS & FLANGES
3 Tielman Roos St, Germiston South
PO Box 14252, Wadeville, 1422
Tel: +27 11 821 5000
Fax: +27 11 821 5030
email: info.macpff@mactrading.co.za

www.macsteel.co.za

MACSTEEL®